

X100

VHF | DSC | AIS



The em-trak X100 isn't just a marine radio —
it's the heart of a safer, calmer, more connected boating experience.

em-trak 

Made for those who love the water but demand reliability, the X100 brings together VHF, DSC, and AIS technology with intuitive wireless control. Whether with family, a full crew, or anchored in quiet, it makes life onboard easier, safer, and more enjoyable.



Overview

ENGINEERED WITHOUT COMPROMISE

- Rugged, water and weather-proof design
- Clear-Wave™ digital audio for crystal-clear communication
- Sunlight-readable full-colour display
- Wi-Fi and Bluetooth connectivity
- NMEA2000 and 0183 integration
- Built-in GPS (optional external antenna)
- Zero-loss VHF antenna splitter, one antenna for AIS and VHF
- Intuitive controls and flexible mounting options

■ X100 Base



X100
VHF | DSC | AIS



LIFE ON THE WATER, MADE EFFORTLESS

■ Stay Connected Anywhere

Onboard: The CONNECT-X app turns your smartphone or smartwatch into a wireless command mic. Make and receive calls, monitor VHF/DSC, AIS traffic, and navigation alerts from anywhere on your vessel.

- **Private Crew Intercom:** Create a secure, boat-wide intercom system for seamless crew communication without broadcasting over VHF.

- **Safety Alerts on Mobile:** Receive instant MOB (Man Overboard) and AIS-PLB alerts directly on your mobile devices, complete with recovery instructions.

- **Scalable Coverage:** Integrates with your vessel's Wi-Fi to eliminate dead spots and ensure full onboard connectivity.

CONNECT-X app

Freedom to Command Anywhere Onboard

The em-trak CONNECT-X app turns your phone or watch into a wireless mic for full X100 control anywhere on your vessel.



YOUR DEVICES BECOME PART OF THE BOAT'S COMMUNICATION SYSTEM:

- **Manage VHF, DSC, AIS & MOB alerts** from anywhere onboard
- **Make and receive VHF/DSC calls** away from the helm
- **Monitor AIS targets** and navigation warnings remotely
- **Receive MOB and AIS-PLB alerts instantly**, with recovery guidance
- **Use private onboard intercom** between CONNECT-X devices
- **Broadcast to the whole vessel** when required
- Stay fully informed, even when relaxing.



■ Features That Elevate Your Boating Experience

The ocean doesn't compromise and neither does the em-trak X100. From the moment you power it on, you'll feel the difference: a marine communication system that's been engineered not just to survive the elements, but to thrive in them.



- Certified Class D VHF/DSC radio with Clear-Wave™ digital audio
- High-powered AIS Class B (5W) transceiver with silent mode
- Private onboard intercom between CONNECT-X devices
- MOB and AIS-PLB detection with instant alerts and recovery guidance
- Unified phonebook for DSC, AIS, and intercom calls
- Seamless AIS data streaming to navigation apps
- One-touch DSC calling for fast, reliable communication.



- **VHF/DSC:** Dependable Class D communication
- **AIS:** Track, be seen, and receive CPA alerts
- **MOB:** Instant detection and guidance

■ Advanced Safety and Communication You Can Rely On



- **Wireless Command-Mic:** Control from anywhere onboard
- **Private Intercom:** Crew connection without chaos
- **One-Touch Calling:** Call AIS targets instantly
- When something matters — a close pass, a call for help, a MOB alert — the X100 acts immediately.

Unique X100 Features for Total Control



X100

- Dual, tri, or custom tri-channel monitoring.
- Quick-access channels and simple fist-mic controls.
- Two-way crew intercom and public address system.
- Loudhailer for direct vessel-to-vessel communication.
- Full compliance with international channel mappings.

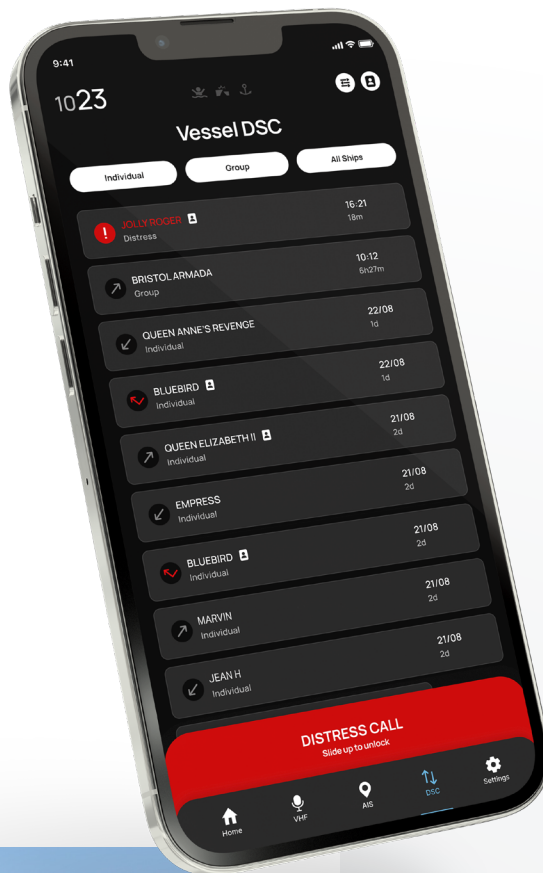


DSC

DSC MADE EFFORTLESS

- **NMEA2000 integration** for DSC messaging
- One-touch **AIS target calling**

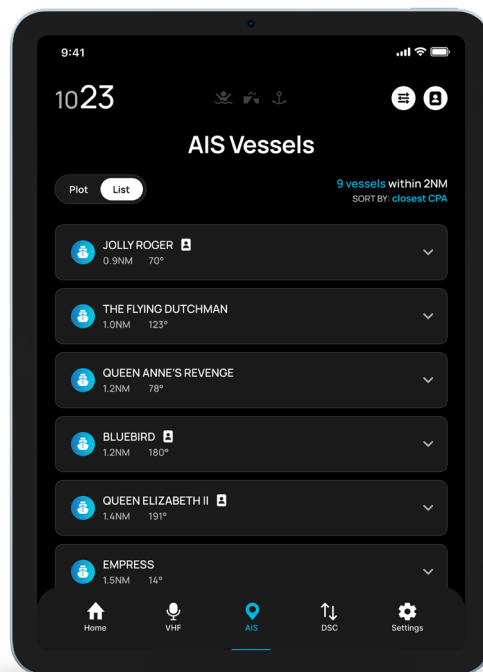
- Safety, urgency, and distress calls at your fingertips.
- Group calling for races and events.
- Test calls to ensure reliability before you set sail.
- Broadcast vessel-wide when you need to.
- Stay fully informed even when relaxing.
- It's freedom, without losing control.



AIS

SAFETY WITHOUT COMPROMISE

- **5W Class B AIS**
for exceptional range
- **Intelligent scheduling**
to avoid interference
- **Silent mode** with auto timer



MOB

- **Automatic MOB**
device enrolment
- **Full Wi-Fi coverage**
for alerts wherever you are

Why Boaters Choose the X100

Because it fits the way people really use their boats:

- **Reliability:** Built for long days, rough weather, and real-world challenges
- **Convenience:** Wireless control, private communication, smart connectivity
- **Safety:** MOB alerts, AIS visibility, DSC calling — always within reach
- **Performance:** Clear-Wave™ audio, high-power AIS, intelligent scheduling
- The X100 brings together everything that matters offshore — connection, clarity, confidence — in one powerful, beautifully integrated system.

The X100 brings together everything that matters offshore — connection, clarity, confidence — in one powerful, beautifully integrated system.



■ Specifications you can trust



Physical specification – base unit

Dimensions	W249mm, H84mm, D162mm
Weight	700–800g

General

RF Frequency range TX	156.025–161.425 MHz
RX	156.300–161.925 MHz
DSC	156.525 MHz
AIS 1,2	161.975, 162.025 MHz
Usable channels	INT, USA, CAN, ATIS

Electrical

Power supply	9.6–31.2 V DC
Operating temperature range	-25°C to +68°C
Antenna impedance	50 Ω
Transmitter output power	VHF: 25W, 1W AIS: 5W

Audio

Audio output power – internal speaker	5W producing 81 dB @ 1m
External speaker/ loudhailer	15W

Connectivity

NMEA 0183 / NMEA 2000	Ed 3.101
Wireless LAN standards	IEEE802.11 b/g/n
Authentication and encryption	WEP (64/128 bit), WPA-PSK (TKIP), WPA2-PSK (AES)
Bluetooth	4.2 classic and low energy (BLE)

Certifications

AIS class B SOTDMA	IEC 62287-2:2017
DSC / VHF	EN 301025 v2.2.1 & IEC 62238
NMEA	IEC 61162-1 & IEC 61162-3
Environmental	IEC 60945 "Exposed" + IEC 60529 IP66



Get yours now

em-trak.com



em-trak United Kingdom

em-trak Marine Electronics Limited
Wireless House
Westfield Industrial Estate
Midsomer Norton
Bath, BA3 4BS
UK

T +44 (0)1761 409 559

F +44 (0)1761 410 093

E enquiries@em-trak.com

em-trak United States

em-trak Marine Electronics Limited
470 Atlantic Avenue, 4th Floor
Boston, 02210
USA

E enquiries@em-trak.com

Dealer stamp:

